

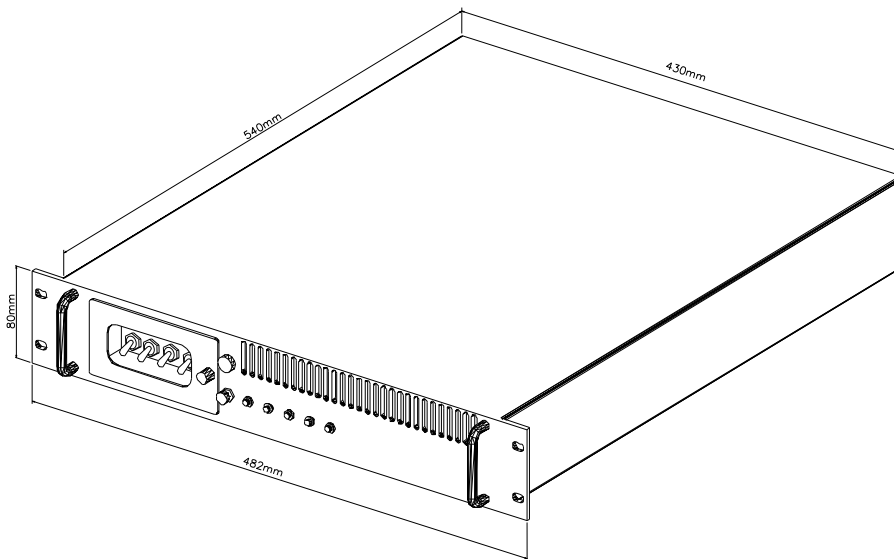
NSN :

MODEL NO.: PC-XX16

DC Power Supply

DRAWING:

W x D x H=482mm x 540mm x 80mm



Special Features :

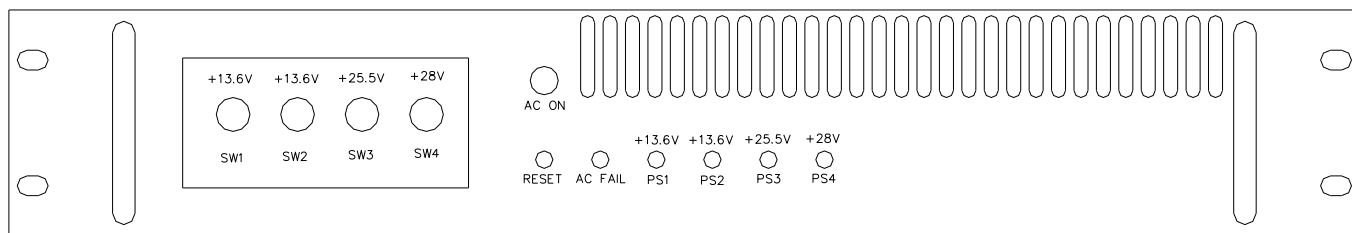
- * All DC power supplies should be switching and modulized type.
- * Input Circuit Breaker and Fuses Provided.
- * LED Display for every output to indicate output normal.
- * DC Power Module can be disabled by TTL fault report (Low Enable, High Disable) from load with photo coupling.
- * Cooling Fan provided.
- * Input/ Output Isolation.
- * Low Profile.
- * Low Ripple & Noise.
- * EMI: Meet FCC Level "A" .
- * Current Limited , Over Voltage Protection.
- * Input Transient Surge Protection , Phase Lose Indication.
- * All PCBs Coating.
- * MTBF : >200,000 hours.
- * Industrial round connectors with latch for inputs and outputs.

MODEL NO.: PC-XX16**Electrical Specifications:**

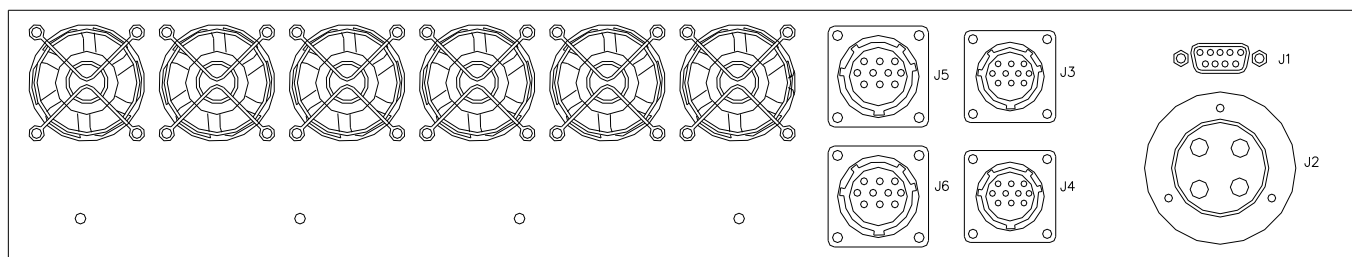
Input	110VAC $\pm 10\%$ (rms) , 1 PHASE , 60 ± 5 Hz.				
Output Power	No.	O/P Voltage	O/P Current	Vnom	Ripple & Noise
	1	+28.0VDC $\pm 1\%$	20.0A	28V	160mV _{PP}
	2	+25.5VDC $\pm 1\%$	15.0A	28V	65mV _{PP}
	3	+13.6VDC $\pm 1\%$	30.0A	15V	90mV _{PP}
	4	+13.6VDC $\pm 1\%$	30.0A	15V	90mV _{PP}
Line Regulation	$\pm 0.2\%$ max. At Full Load and Low Line Input or High Line Input.				
Load Regulation	$\pm 0.2\%$ max. At Nominal Line Input from 10% Load to 100% Load.				
Output Protection	O/P Voltage	OVP set point	Short & current limit		
	+28.0VDC	33.6V $\pm 5\%$	25A $\pm 15\%$		
	+25.5VDC	30.6V $\pm 5\%$	21A $\pm 15\%$		
	+13.6VDC	16.3V $\pm 5\%$	38A $\pm 15\%$		
	+13.6VDC	16.3V $\pm 5\%$	38A $\pm 15\%$		
AC Fault Protection	Over Voltage	With Indication and Reset Switch. Short Circuit, Current Limit, Over Voltage.			
	Transient Surge				
	Phase Lose				
Remote Sense	0.25Vdc Max.				
Inrush Current	Maximum 100A.				
EMI	Meet FCC Level "A" (EMI Test Report Provided Only).				
Safety	UL, CSA, VDE, TÜV (No Compliance Approvals Provided).				
Efficiency	$> 75\%$.				
Enable/Disable	TTL level (photo-coupler isolated) for each output No.				
Operation Temperature	-10°C ~ +50°C Ambient.				
Storage Temperature	- 40°C ~ +85°C .				
Temperature Coefficient	0.02 %/°C max.				
Isolation	Leakage Current : $\leq 1\text{mA}$ @Test Voltage=500Vdc; Test Time=2 sec. for I/P to O/P.				
Insulation Resistance	$\geq 10\text{M}\Omega$ @Test Voltage= 100Vdc test for I/P to O/P; I/P to Chassis; O/P to Chassis.				
Cooling	Force Air Cooling by Fans for each power module.				

Size	482mm(W) * 540mm(D) * 80mm(H) (max.)
Mechanical	See Attached Drawing: (1) 19" Standard Rack. (2) Power Supply: *One input and four output industrial round connectors with latch on rear panel. *Four cooling fans on rear panel. *Green LED display for each output normal operating on front panel.
Case Material	AL5052-H32, t=2mm +/-5%.

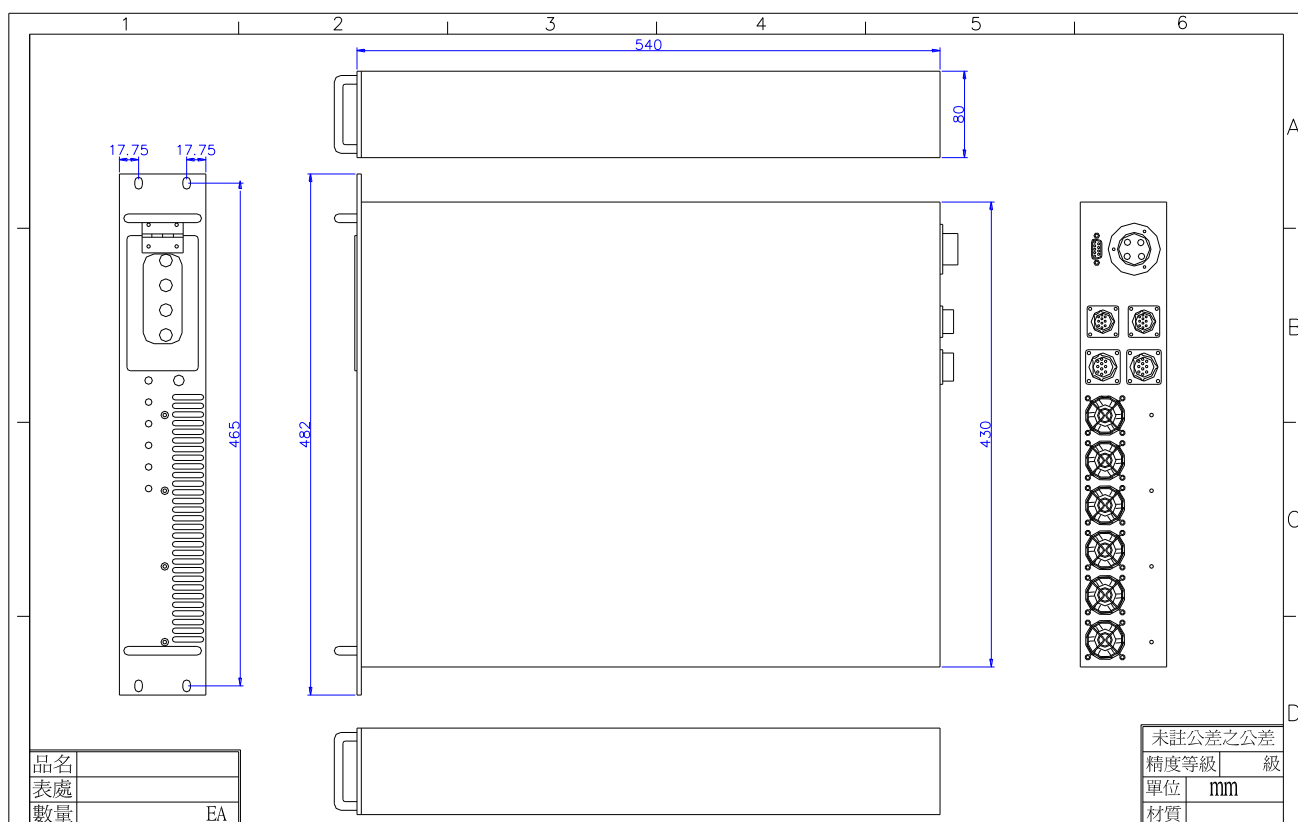
附圖一：(前面板圖)




附圖二：(後背板圖)

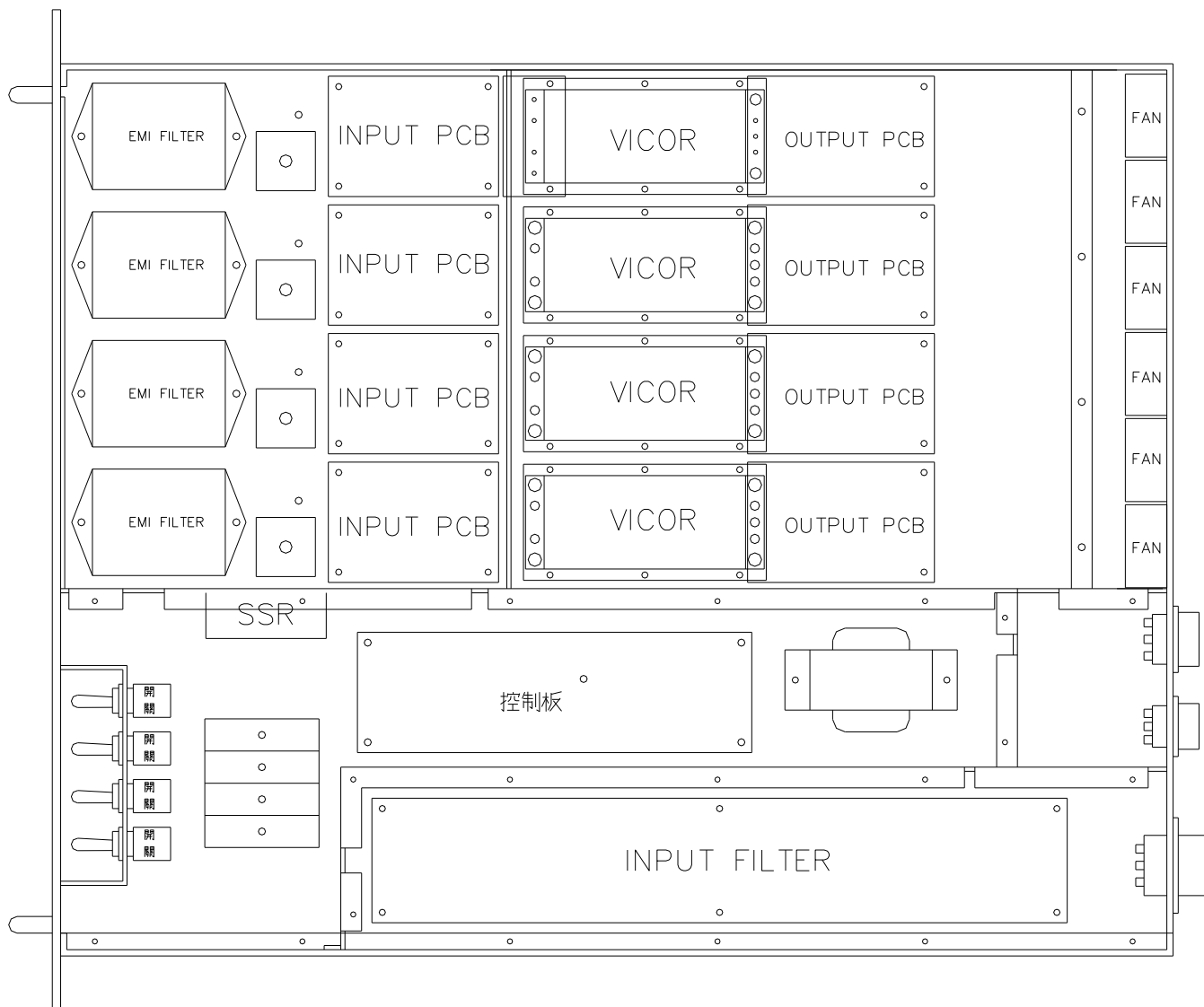


附圖三：(尺寸圖)



PART NO:	PART NAME:	FILE PATH:	VERSION NO:	 寶虹電子股份有限公司 POWER-CON Electronics Corp
DRAWN BY: 志榮	CHECKED BY:	APPROVED BY:	ISSUE DATE:	

附圖四：(內部視圖)



附圖五：(實體圖)

