

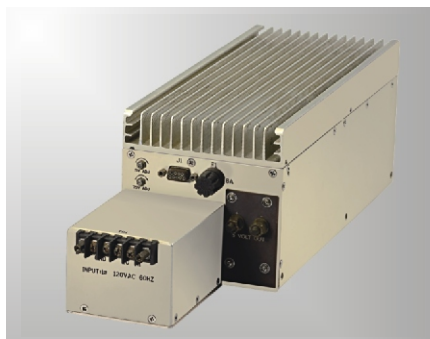
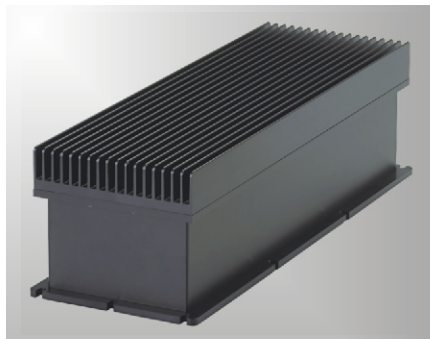
# Military Power Supply

## Features

- ▶ AC input: 220Vac or 120/208Vac, 3 $\psi$ , 3W+G
- ▶ Parallel function for XX05,XX06,XX07 (Redundancy)
- ▶ High temperature and humidity environment
- ▶ Protection: SCP/OVP/OCP/OTP
- ▶ Voltage sense line
- ▶ High reliability: MTBF 100,000 hours min.

## Compliance

- ▶ MIL-STD-810E MIL-Standard approved
- ▶ MIL-STD-461C (CE03, RE02, RS03, CS06) MIL-Standard approved



# Military Power Supply

Model No.	Input Power (Vac/Hz)	Output Voltage/Current (Vdc/Amps)	Output Power(W)	Dimension L*W*H (mm)
PC-XX07-0	120VAC±10% 1Φ, 60±5HZ	5V/2.5~25A 75V/0.05~0.5A	162.5W	426.52*125*127
PC-XX30-1	300Vdc (+20%-15%)	32Vdc/14A or 50Vdc/11A	550W	400*145*120
PC-XX06-0	120/208Vac±10%, 3phase, 60±5Hz	50Vdc/14A	700W	280*203*127
PC-XX30-2	300Vdc (+20%-15%)	30Vdc/20A or 24Vdc/30A or 28Vdc/4.3A	720W	400*145*120
PC-XX05-0	120/208Vac±10%, 3phase, 60±5Hz	5Vdc/220A	1100W	335*203*127
PC-XX16-0	110Vac±10%, 1phase, 60±5Hz	28Vdc/20A 25.5Vdc/15A 13.6Vdc/30A*2	1758W	482*540*80
PC-XX16-B	110Vac±10%, 1phase, 60±5Hz	29Vdc/69A	2000W	482*540*89
PC-XX27-2	18~36Vdc	28Vdc/67.85A -28Vdc/14.2A	2300W	250*350*361
PC-XX28-A	180~264Vac, 3phase, 57~63Hz	28Vdc/52A 13.5Vdc/90A	2671W	482*500*266
PC-XX13-0	208Vac±10%, 3phase, 47~440Hz	42Vdc/4.16A*16 24Vdc/12.5A 12Vdc/12.5A*2 -12Vdc/6.25A 5Vdc/20A -5Vdc/10A	3620.5W	466*466*466
PC-XX18-C	220Vac±10%, 3phase, 47~63Hz (two individual I/P for Utility and Generator)	300Vdc/50A	15000W	482*266*640